



**Vipac Engineers and Scientists Limited**

279 Normanby Rd, Port Melbourne, VIC 3207, Australia

Private Bag 16, Port Melbourne, VIC 3207, Australia

t. +61 3 9647 9700 | e. melbourne@vipac.com.au

w. www.vipac.com.au | A.B.N. 33 005 453 627 | A.C.N. 005 453 627

Heworth Holdings Group Pty Ltd

44-52 Anderson Street, Chatswood

Wind Impact Assessment

30N-20-0237-TRP-6824218-1

12 February 2021

<b>Job Title:</b> 44-52 Anderson Street, Chatswood			
<b>Report Title:</b> Wind Impact Assessment			
<b>Document Reference:</b> 30N-20-0237-TRP-6824218-1			
<b>Prepared For:</b> Heworth Holdings Group Pty Ltd Level 21, The Zenith Tower A, 821 Pacific Highway Chatswood , New South Wales, 2067, Australia <b>Contact:</b> Paul Bermingham <b>Tel:</b> 0450 722 683	<b>Prepared By:</b> Vipac Engineers and Scientists Limited 279 Normanby Rd, Port Melbourne, VIC 3207, Australia <b>Tel:</b> +61 3 9647 9700		
<b>Author:</b>	Sophie Lamande 12 February 2021 Wind Group Leader		
<b>Reviewer:</b>	Zhuyun Xu 12 February 2021 Senior Wind Engineer		
<b>Issued By:</b>	Sophie Lamande 12 February 2021 Wind Group Leader		
<b>Revision History:</b>			
<i>Rev. #</i>	<i>Comments / Details of change(s) made</i>	<i>Date</i>	<i>Revised by:</i>
Rev. 00	Original issue	22 Dec 20	S. Lamande
Rev. 01	Incorporating comments	12 Feb 21	S. Lamande

NOTE: This report has been prepared solely for the benefit of the client to whom this report is addressed for use herein ("Client") unless otherwise agreed in writing by Vipac Engineers and Scientists Limited ACN 005 453 627 ("Vipac"). Neither the whole of this report or any part of it may be published, duplicated or circulated without the prior written approval of Vipac except as required by law. Vipac does not assume any responsibility or liability for any losses suffered as a result of the publication, duplication or circulation of this report and excludes all liability whatsoever to any third party who may use or rely on the whole, or any part of this report.

Vipac has prepared this report using all reasonable care, skill and due diligence within the time period, budget and resources allocated to Vipac as agreed with the Client. Vipac excludes all liability to the Client whatsoever, whether in whole or in part, for the Client's use or reliance on the report other than for the purposes set out in the report, or any matters outside the agreed scope of the work.

For the purposes of preparing this report, reliance has been placed upon the material, representations, information and instructions provided to Vipac unless otherwise stated in the report. Originals of documents provided have not been required and no audit or examination of the validity of the documentation, representations, information or instructions provided has been undertaken except to the extent otherwise stated in this report. Information and findings contained in this report are based on Vipac's interpretation of data collected.

This document contains commercial, conceptual, engineering and other information that is proprietary to Vipac. The inclusion of this information in the report does not grant the Client any license to use the information without Vipac's prior written permission.

## Executive Summary

**Heworth Holdings Group Pty Ltd** commissioned Vipac Engineers and Scientists Pty Ltd to investigate the pedestrian wind environment in and adjacent to the proposed development at 44-52 Anderson Street, Chatswood for planning approval purposes. This appraisal is based on Vipac's experience as a wind engineering consultancy.

Drawings of the proposed development were supplied by **Heworth** in **Feb 2021**, as described in Appendix C of this report. The findings of this study can be summarised as follows:

- With the proposed design, the wind conditions along the pedestrian ground level foot path areas are expected to be within the criterion for walking.
- With the proposed design, the development is expected to generate wind conditions at the ground level building entrance areas within the recommended standing criterion.
- With the proposed design, and **the recommended wind control measures**, the wind conditions at podium rooftop and tower rooftop terraces areas are expected to be within the recommended criterion for walking.
- With the proposed design the wind conditions on apartment balconies are expected to be within the recommended criterion for walking.

As a general statement, educating occupants about wind conditions at open terrace/apartment balcony areas during high-wind events and tying down the lightweight furniture in these areas are highly recommended.

The recommendations and assessments provided in this report have been made based on empirical data and experience of similar situations in Sydney and around the world. As with any opinion, it is possible that an assessment of wind effects based on experience and without wind tunnel model testing may not account for all complex flow scenarios in the vicinity. We recommend wind tunnel testing be undertaken in the detail design phase.

## Table of Contents

<b>1</b>	<b>Introduction .....</b>	<b>5</b>
<b>2</b>	<b>Analysis Approach .....</b>	<b>7</b>
2.1	Site Exposure.....	8
2.2	Regional Wind Climate.....	9
2.3	Building Geometry and Orientation .....	10
2.4	Flow interactions with adjacent developments .....	11
2.5	Assessment Criteria .....	12
2.5.1	Use of Adjacent Pedestrian Occupied Areas & Recommended Comfort Criteria.....	12
<b>3</b>	<b>Pedestrian Level Wind Effects .....</b>	<b>16</b>
3.1	Discussion & Recommendations .....	16
3.1.1	Street Level.....	16
3.1.2	Podium Rooftop and Tower Rooftop Terraces .....	16
3.1.3	Open Tower Lobby Option .....	16
<b>4</b>	<b>Conclusions .....</b>	<b>17</b>
	Appendix A Environmental Wind Effects .....	18
	Appendix B References .....	19
	Appendix C Drawing List .....	20



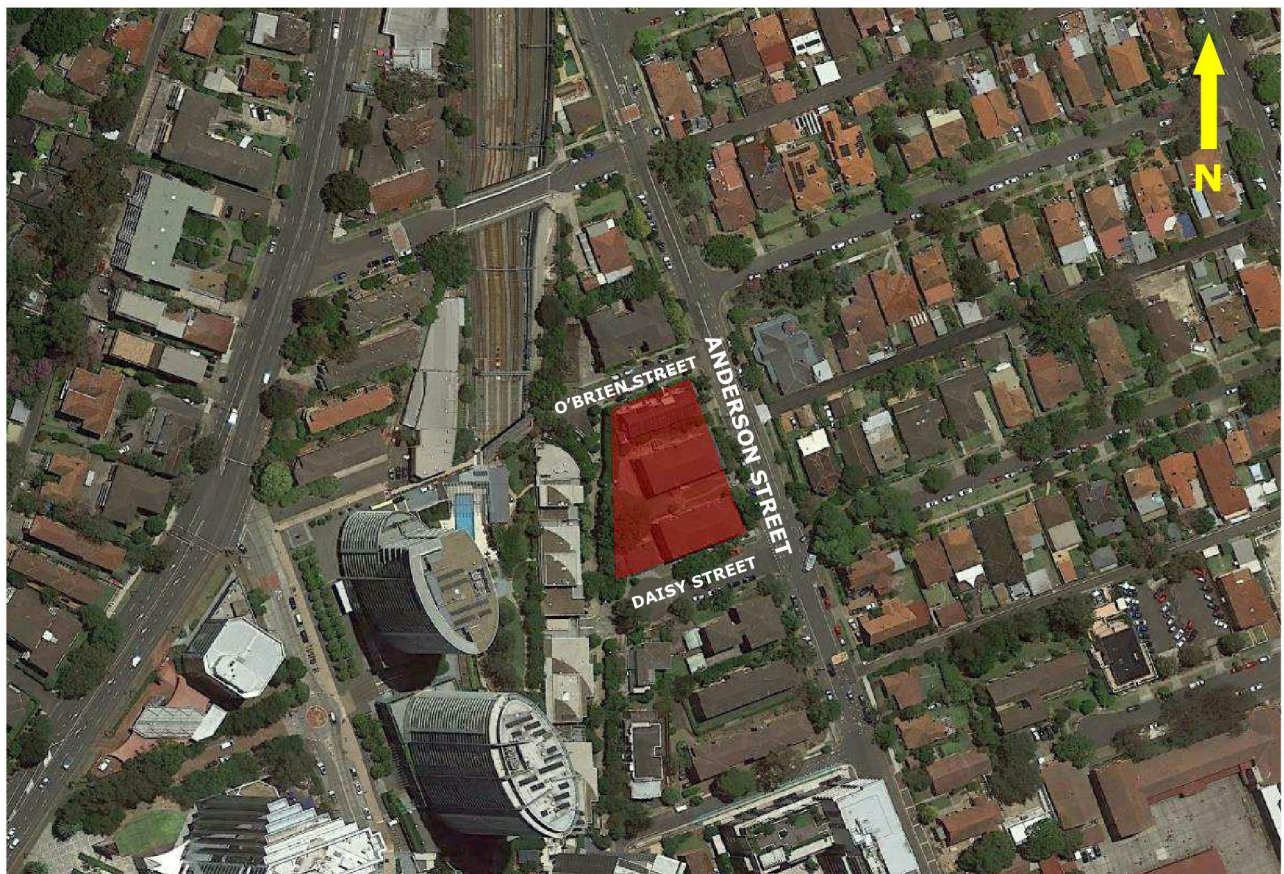
## 1 Introduction

Vipac Engineers and Scientists has been commissioned by **Heworth Holdings Group Pty Ltd** to prepare a statement of wind effects for the adjacent ground level areas and roof terraces of the proposed development at 44-52 Anderson Street, Chatswood. This appraisal is based on Vipac's experience as a wind-engineering consultancy.

The proposed development site is bounded by Anderson St to the east, O'Brien St to the north, Daisy St to the south, and existing buildings and railway tracks to the west (Figure 1). The building consists of 24 storeys with a roof height of approximately 86.92 m above street level (Figure 2).

This report details the opinion of Vipac as an experienced wind engineering consultancy regarding the wind effects in ground level public areas and access-ways adjacent to the development as proposed. No wind tunnel testing has been carried out for this development at this stage. Vipac has carried out wind tunnel studies on a large number of developments of similar shape and having similar exposure to that of the proposed development. These serve as a valid reference for the prediction of wind effects for this development. Empirical data for typical buildings in boundary layer flows has also been used to estimate likely ground level wind conditions adjacent to the proposed development [2] & [3].

Drawings of the proposed development were provided by **Heworth** in **February 2021** as listed in Appendix C of this report.



*Figure 1: Satellite imagery of the proposed development site*



## 2 Analysis Approach

When considering whether a proposed development is likely to generate adverse wind conditions in adjacent ground level areas, Vipac considers five main points:

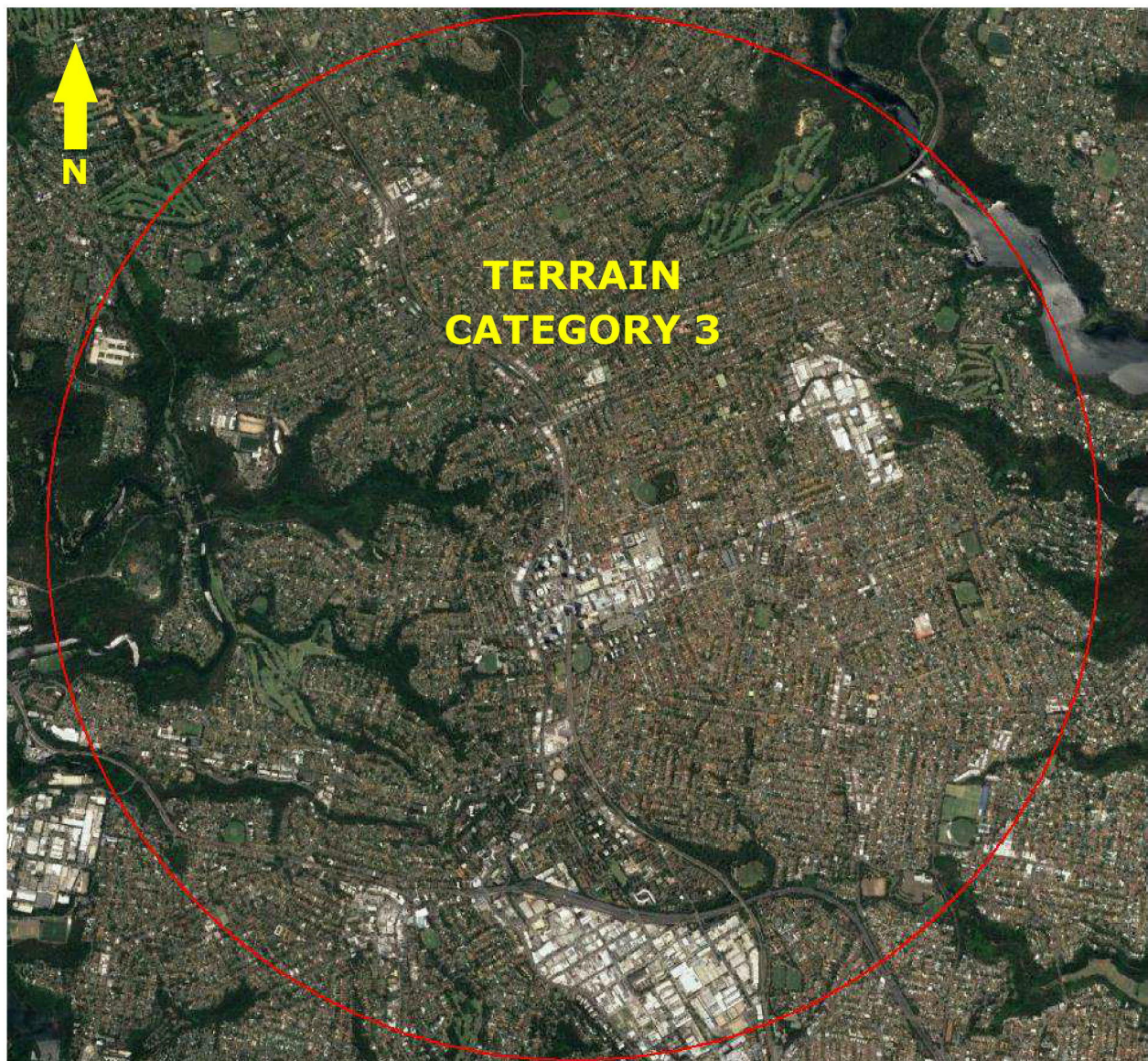
- The exposure of the proposed development to wind;
- The regional wind climate;
- The geometry and orientation of the proposed development;
- The interaction of flows with adjacent developments;
- The assessment criteria, determined by the intended use of the public areas affected by wind flows generated or augmented by the proposed development.

The pedestrian wind comfort at specific locations around a site may be assessed by predicting the worst annual 3-second wind gust expected at that location. The location may be deemed generally acceptable for its intended use if the annual 3-second gust is within the threshold values noted in Section 2.5. For cases where Vipac predicts that a location would not meet its appropriate comfort criterion we may recommend the use of wind control devices and/or local building geometry modifications to achieve the desired comfort rating. For complex flow scenarios or where predicted flow conditions are well in excess of the recommended criteria, Vipac recommends scale model wind tunnel testing to determine the type and scope of the wind control measures required to achieve acceptable wind conditions.



## 2.1 Site Exposure

The proposed development is located on relatively flat terrain, surrounded within a 3 km radius by suburban housing, low rise retail and office buildings in most directions, with the built up areas to the south sector. There are a number of future high-rise developments in planning in the nearby area (in south and west directions). Considering the immediate surroundings and terrain, for the purposes of this study, the site of the proposed development is assumed to be within Terrain Category 3 for all wind directions (Figure 3).



*Figure 3: Assumed terrain roughness for wind speed estimation*

## 2.2 Regional Wind Climate

The mean and gust wind speeds have been recorded in the Sydney area for over 30 years. These data have been analysed and the directional probability distribution of wind speeds have been determined. The directional distribution of hourly mean wind speed in daylight times at the gradient height with a probability of occurring 0.1% and 5% of the time are shown in Figure 4. The wind data at this free stream height is common to all Sydney sites and may be used as a reference to assess ground level wind conditions at the development site.

**Hourly Mean Wind Speeds 0.1% and 5% exceedance  
(m/s), at 500 m height, Cat 2, Sydney**

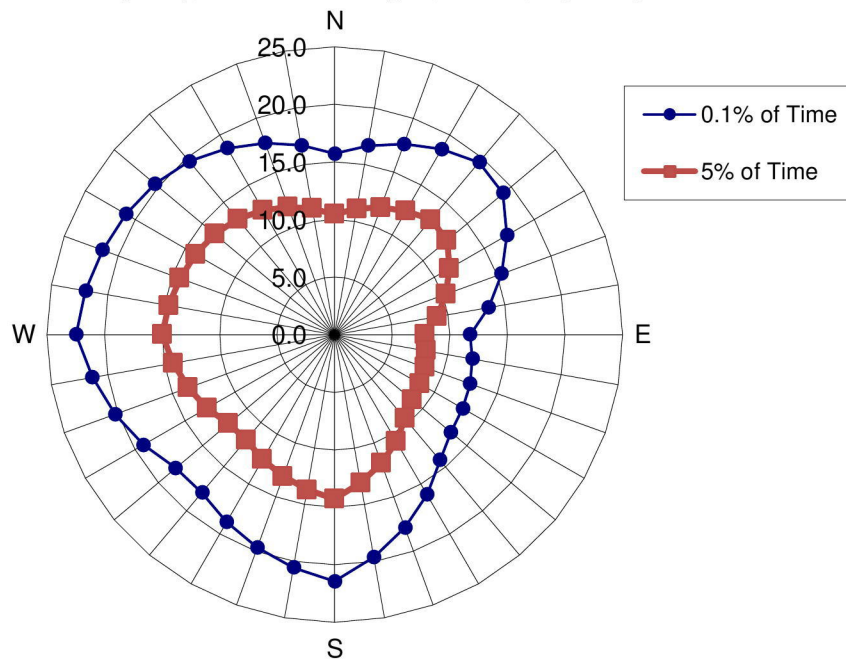


Figure 4: Directional Distribution of Mean Hourly Wind Velocities (m/s) of 0.1% and 5% of time at the gradient height for Sydney.



## 2.3 Building Geometry and Orientation

The proposed development site has a trapezium plan, with the dimensions of approximately 60 m x 30 – 45 m as shown in Figure 5. The long side runs along Anderson St. The proposed building consists of 24storeys with a roof height of approximately 86.92 m above street level.



Figure 5: Ground floor plan of the proposed development with approximate dimensions



## 2.4 Flow interactions with adjacent developments

The immediately adjacent developments and their approximate heights are shown in Figure 6. There are existing buildings varying from 1-4 storeys surrounding the development and two approximately 27 storey towers in the west to southwest directions.

In the future surroundings, the south to west sectors are all proposed to be high rise buildings, whereas the north and east sectors remain as low rise dwellings.



Figure 6: Immediately adjacent surroundings and their approximate storeys overlaid

## 2.5 Assessment Criteria

The wind comfort criteria from the Central Sydney Planning Strategy (Attachment B7: 4 Implementation) has been applied to this study. The document recommends the following wind safety and comfort criteria (Table 1):

Table 1: Wind Criteria summarized from Central Sydney Planning Strategy

Measurements	Result on Perceived Pedestrian Comfort
<b>Peak</b> wind speed (0.5 second gust) once per year, <b>≤24m/sec</b> for any direction.	Accepted international criterion for human safety to avoid a healthy pedestrian losing balance
Hourly <b>mean</b> wind speed, 5% of the time, <b>≤8m/sec</b> , for any directions.	Acceptable for <b>walking</b> (steady steps for most pedestrians)
Hourly <b>mean</b> wind speed, 5% of the time, <b>≤6m/sec</b> , for any directions.	Acceptable for <b>standing</b> (wind shopping, vehicle drop off)
Hourly <b>mean</b> wind speed, 5% of the time. <b>≤4m/sec</b> , for any directions.	Acceptable for <b>sitting</b> (outdoor cafes, gardens, park benches)

### 2.5.1 Use of Adjacent Pedestrian Occupied Areas & Recommended Comfort Criteria

The following table lists the specific areas adjacent to the proposed development and the corresponding recommended criteria (see Figure 7 for ground floor, Figure 8 for podium roof and Figure 9 for roof terraces).

Table 2: Recommended application of criteria

Area	Specific location	Recommended Criteria
Public Footpaths	Along the building frontage on Anderson St, Wilson St and O'Brien St.	Walking
Building entrances	Access way to Residential Lobby; retail entrances on Anderson St.	Standing
Apartment balconies and terraces	Various levels, podium roof garden and roof terraces	Walking (see discussion below)

#### Apartment Balcony/terrace Recommended Criterion Discussion

Vipac generally recommends as a minimum that communal terrace areas/balconies meet the criterion for walking since:

- these areas are not public spaces;
- the use of these areas is optional;
- many similar developments in Sydney and other Australian capital cities experience wind conditions on balconies and elevated deck areas in the vicinity of the criterion for walking.

Vipac wishes to state that meeting the walking criterion on elevated recreation areas will be no guarantee that occupants will find wind conditions in these areas acceptable at all times.



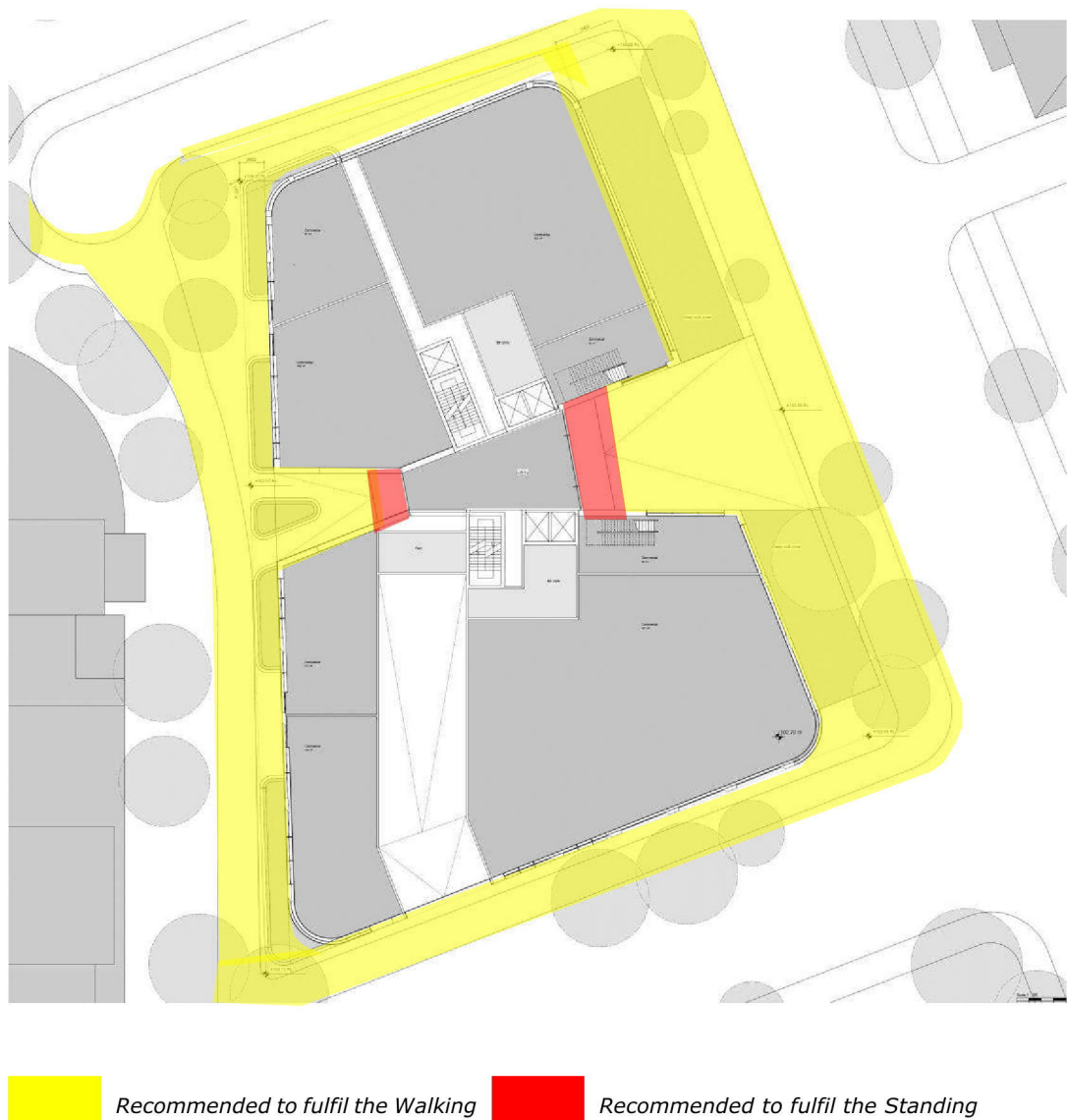
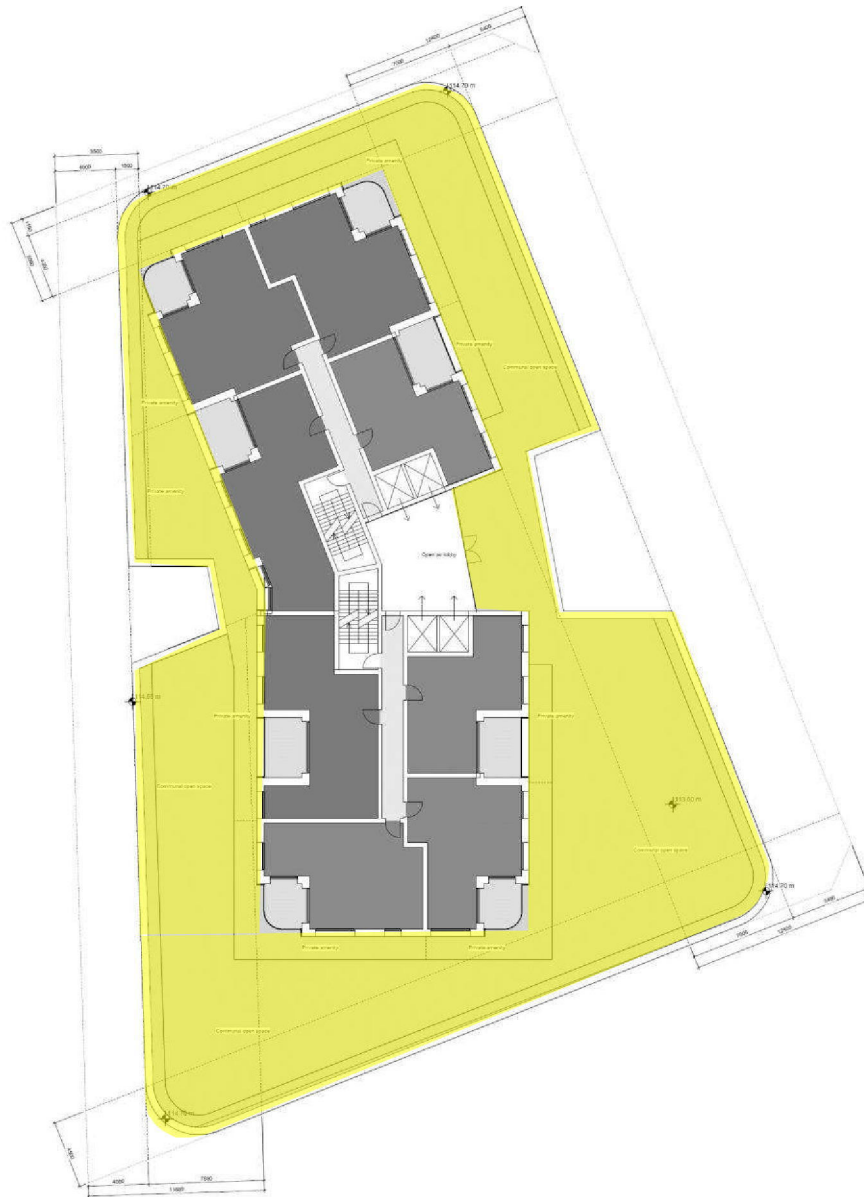


Figure 7: Schematic plan view of the ground level of the proposed development with the recommended wind criteria overlaid



 Recommended to fulfil the walking comfort Criterion

Figure 8: Schematic plan view of the Level 02 podium rooftop of the proposed development with the recommended wind criteria overlaid

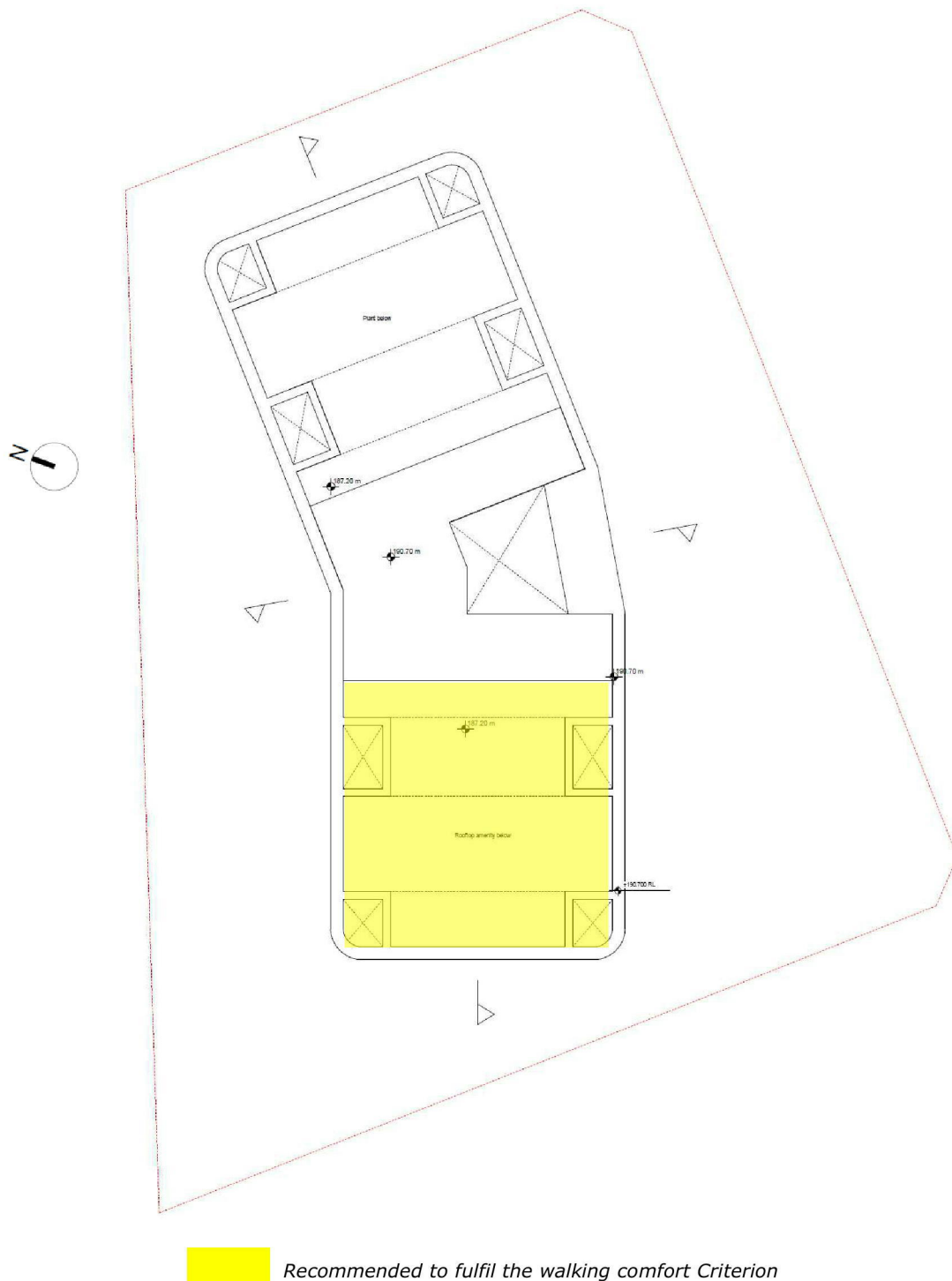


Figure 9: Schematic plan view of the rooftop of the proposed development with the recommended wind criteria overlaid

## 3 Pedestrian Level Wind Effects

### 3.1 Discussion & Recommendations

It should be noted that this study is based on experience only and has not utilised any experimental data for the analysis.

#### 3.1.1 Street Level

The climate in Sydney has high mean winds from the westerly, southerly and north-easterly cardinal directions. As such, it is expected that there will be some adverse wind effects at the corners of Anderson St with O'Brien St and Daisy St. However, considering the features of the design that will counteract these negative effects (i.e. curved podium corner, appropriate set back tower from the podium), wind conditions are expected to be within or on the recommended walking criterion in all adjacent footpath areas.

The main building lobby is located at the podium centre away from building corners and is well set back within the envelope of the building. There is some shielding from the building above from downwash winds. As such, the main building entry is expected to be within the recommended standing comfort criterion.

#### 3.1.2 Podium Rooftop and Tower Rooftop Terraces

It is expected that there will be some down wash effects at the podium rooftop and tower rooftop terraces. Wind conditions might be on or over recommended walking criterion. Vipac recommends, in general, 1.4 m high balustrade for the perimeter of podium rooftop terrace and 1.8 m high balustrades for the tower rooftop terraces. There is extensive landscaping proposed on both the podium and tower rooftop terrace areas, as well as pergolas on the rooftop. Considering these treatments, we expect many areas would meet the more stringent standing or sitting comfort criteria. These could be verified in a scaled wind tunnel test.

Whilst wind conditions on the proposed apartment balconies will frequently be acceptable for outdoor recreation, during moderate to strong winds, conditions in these areas may exceed human comfort criteria. Balcony areas on similar developments in many major Australian capital cities typically experience similar elevated wind conditions. High exposure, corner acceleration flows and standing vortices would sometimes preclude these areas from use for outdoor recreation.

#### 3.1.3 Open Tower Lobby Option

The proposed design will potentially incorporate open lobbies up the height of the tower. The lobbies will be open on only the eastern side, and broken up every three levels, so we do not expect significant channelling of winds into these spaces to cause significant issues in terms of occupant comfort. This will be investigated as part of a detailed DA wind assessment report to determine appropriate measures to minimise impacts on days of high winds.



## 4 Conclusions

An appraisal of the likely wind conditions in the adjacent ground level areas of the proposed development at 44-52 Anderson Street, Chatswood has been made.

Vipac has carefully considered the form and exposure of the proposed development, nominated criteria for various public areas according to their function and referred to past experience to produce our opinion of likely wind conditions. Based on this assessment, the following conclusions are drawn:

- With the proposed design, the wind conditions along the pedestrian ground level foot path areas are expected to be within the criterion for walking.
- With the proposed design, the development is expected to generate wind conditions at the ground level building entrance areas within the recommended standing criterion.
- With the proposed design, and **the recommended wind control measures**, the wind conditions at podium rooftop and tower rooftop terraces areas are expected to be within the recommended criterion for walking.
- With the proposed design the wind conditions on apartment balconies are expected to be within the recommended criterion for walking.

As a general statement, educating occupants about wind conditions at open terrace/apartment balcony areas during high-wind events and tying down the lightweight furniture in these areas are highly recommended.

The recommendations and assessments provided in this report have been made based on empirical data and experience of similar situations in Sydney and around the world. As with any opinion, it is possible that an assessment of wind effects based on experience and without wind tunnel model testing may not account for all complex flow scenarios in the vicinity. We recommend wind tunnel testing be undertaken in the detail design phase.

*This Report has been Prepared*

*For*

*Heworth Holdings Group Pty Ltd*

*By*

*VIPAC ENGINEERS & SCIENTISTS LTD.*

## Appendix A Environmental Wind Effects

### Atmospheric Boundary Layer

As wind flows over the earth it encounters various roughness elements and terrain such as water, forests, houses and buildings. To varying degrees, these elements reduce the mean wind speed at low elevations and increase air turbulence. The wind above these obstructions travels with unattenuated velocity, driven by atmospheric pressure gradients. The resultant increase in wind speed with height above ground is known as a wind velocity profile. When this wind profile encounters a tall building, some of the fast moving wind at upper elevations is diverted down to ground level resulting in local adverse wind effects.

The terminology used to describe the wind flow patterns around the proposed Development is based on the aerodynamic mechanism, direction and nature of the wind flow.

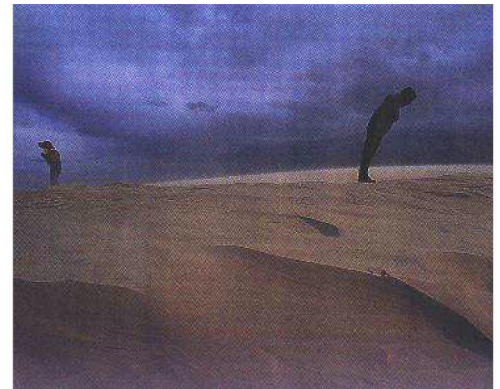
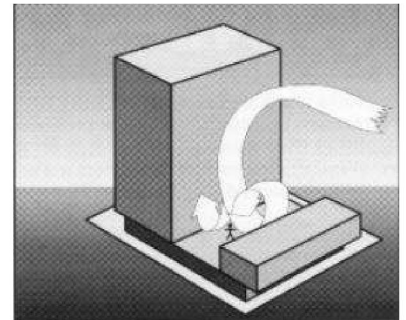
**Downwash** – refers to a flow of air down the exposed face of a tower. A tall tower can deflect a fast moving wind at higher elevations downwards.

**Corner Accelerations** – when wind flows around the corner of a building it tends to accelerate in a similar manner to airflow over the top of an aeroplane wing.

**Flow separation** – when wind flowing along a surface suddenly detaches from that surface and the resultant energy dissipation produces increased turbulence in the flow. Flow separation at a building corner or at a solid screen can result in gusty conditions.

**Flow channelling** – the well-known “street canyon” effect occurs when a large volume of air is funnelled through a constricted pathway. To maintain flow continuity the wind must speed up as it passes through the constriction. Examples of this might occur between two towers, in a narrowing street or under a bridge.














**Direct Exposure** – a location with little upstream shielding for a wind direction of interest. The location will be exposed to the unabated mean wind and gust velocity. Piers and open water frontage may have such exposure.



## Appendix B References

- [1] *Structural Design Actions, Part 2: Wind Actions*, Australian/New Zealand Standard 1170.2:2011
- [2] *Wind Effects on Structures* E. Simiu, R Scanlan, Publisher: Wiley-Interscience
- [3] *Architectural Aerodynamics* R. Aynsley, W. Melbourne, B. Vickery, Publisher: Applied Science Publishers

## Appendix C Drawing List

Name	Date modified
 ASK201217_001	17/12/2020 2:54 PM
 PP2005	17/12/2020 2:54 PM
 PP2006	17/12/2020 2:54 PM
 PP2007	17/12/2020 2:54 PM
 PP2008	17/12/2020 2:54 PM
 PP2009	17/12/2020 2:54 PM
 PP2010	17/12/2020 2:54 PM
 PP2011	17/12/2020 2:54 PM
 PP2012	17/12/2020 2:54 PM
 PP2013	17/12/2020 2:54 PM
 PP2014	17/12/2020 2:54 PM
 PP2020	17/12/2020 2:54 PM
 PP2100	17/12/2020 2:54 PM